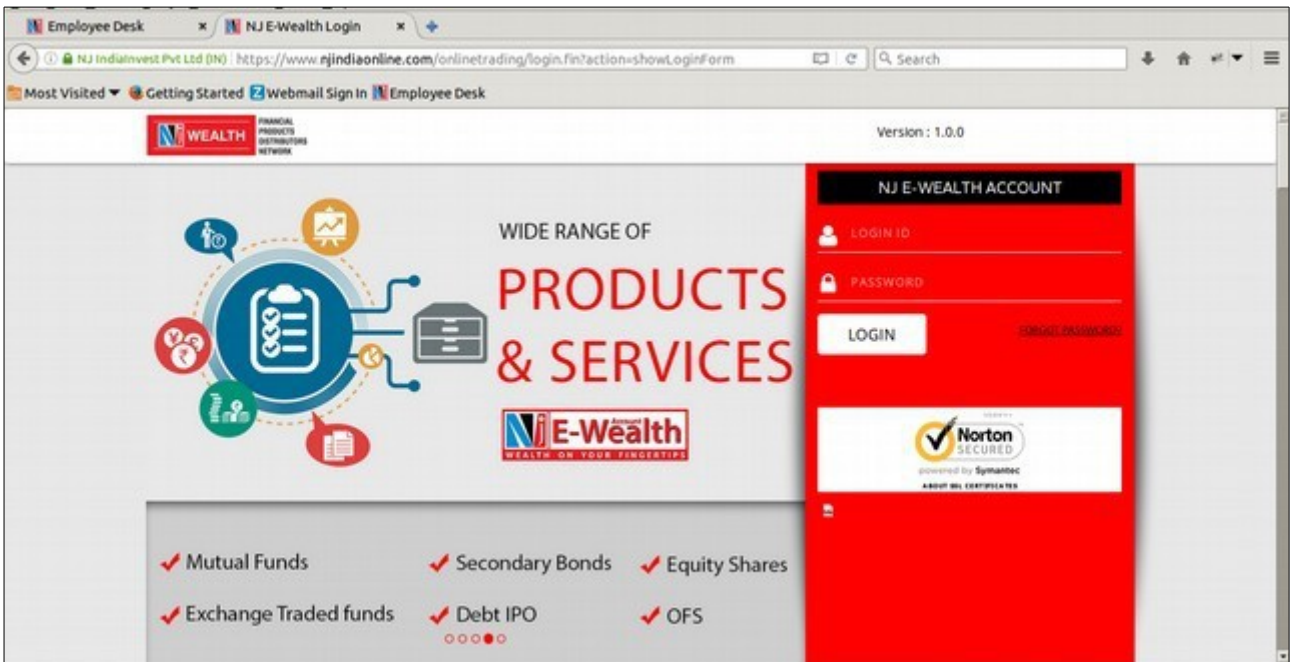
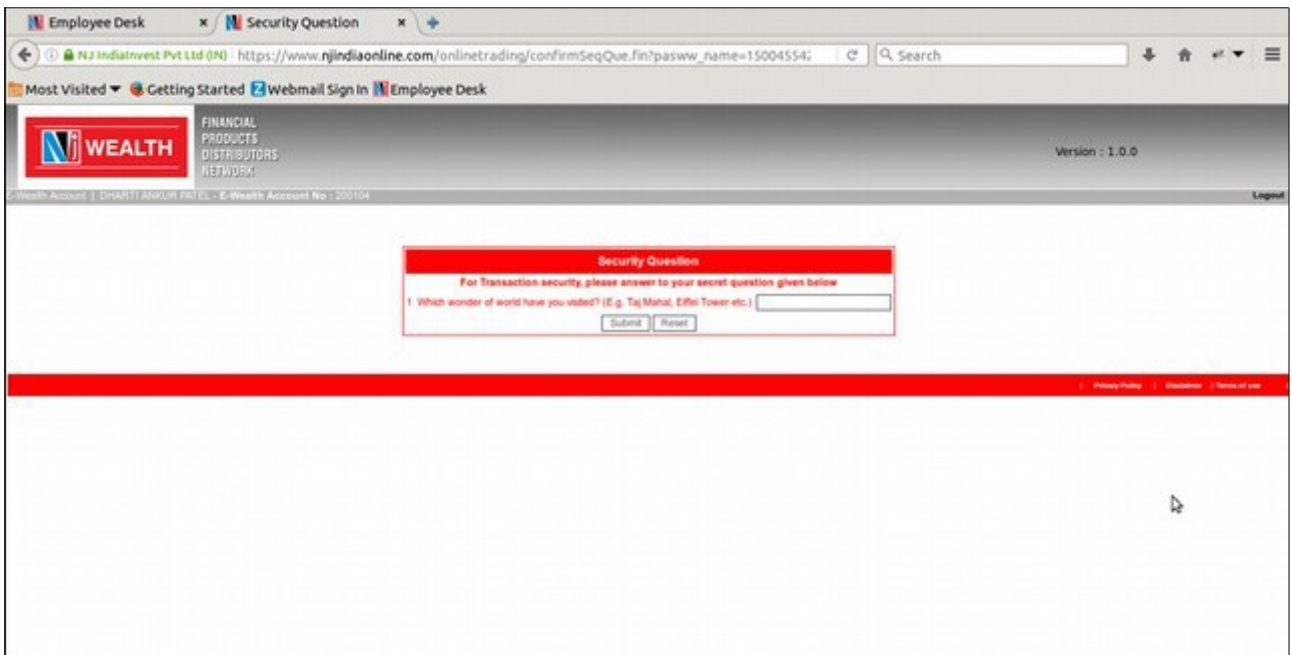


## 1. Introduction:

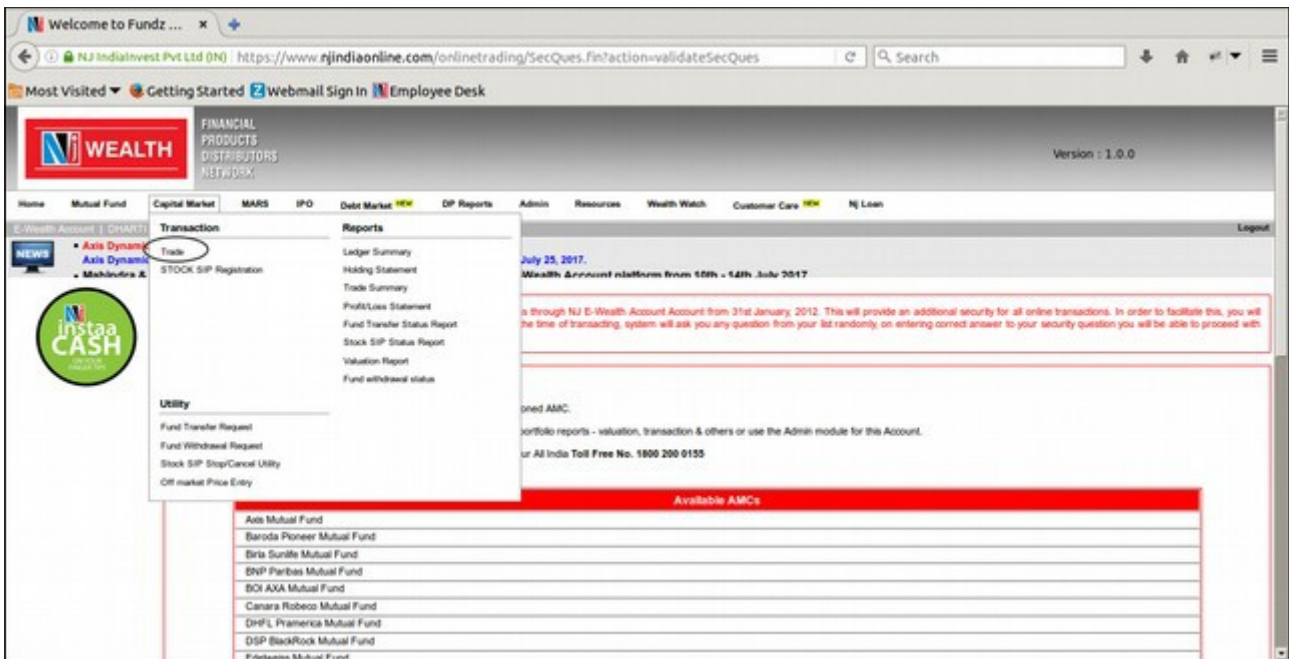
1.1 User visits [www.njindiaonline.com](http://www.njindiaonline.com) to trade in capital market. User will log in with his/her login credentials.



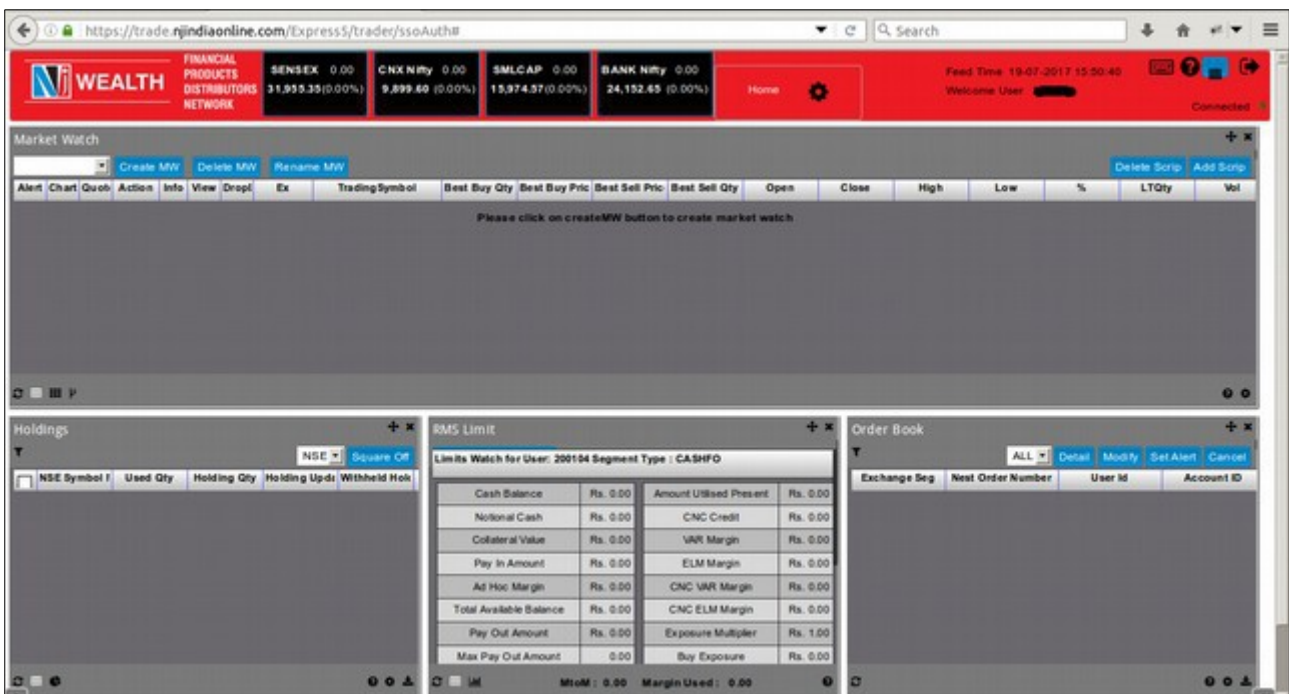
1.2 After successful log in, a Security Question will be asked and on submit of the correct answer, User will be directed to the home page of NJ E-Wealth Desk.



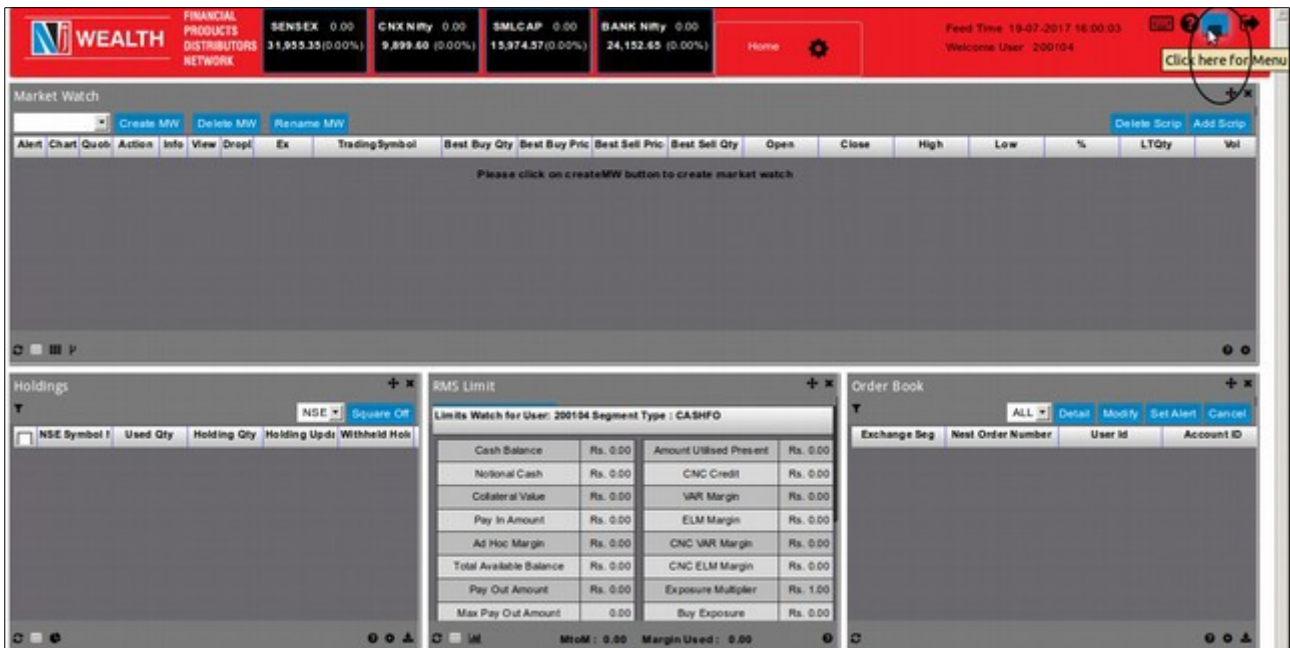
1.3 To trade in Capital Market – Equity segment, there is a menu of “ Capital Market” ,take mouse arrow on menu and under the said menu , click on a tab of “Trade”. Or [click on NJ Capital Market Logo](#)



1.4 On clicking the “Trade” tab , User will be re-directed to the landing page of the “NJ CM”.



1.5 To view & add the Market watch, Order Book, Trade Book etc window in main screen, click on the given menu. User can have maximum 9 windows to view on screen.

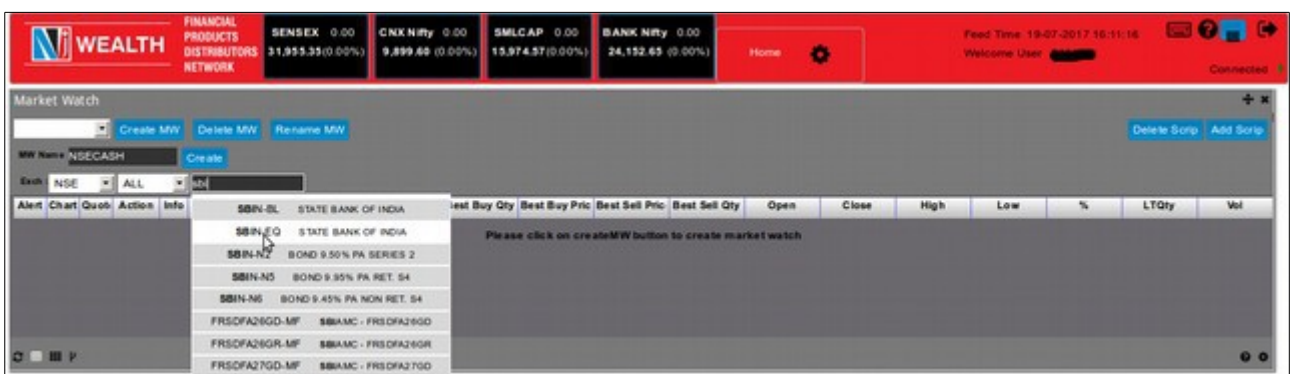


### Market watch group settings:

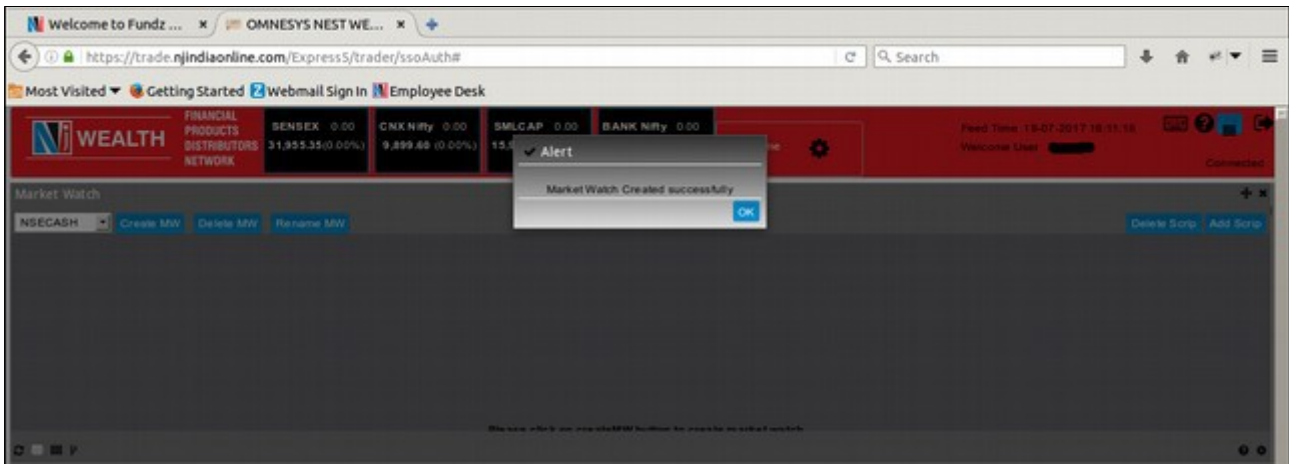
#### Create Market Watch & to add Scrips

This option allows user to configure their desired scrips in the Market watch. For accessing the Market Watch window, the user has to click on the create market watch → enter the Market Watch name. Then select the exchange and select the Group – Here if group is selected as “ALL” then Scrip is mandatory to enter for Market watch.

This option allows the user to add scrips in the market watch. User has to select the desired exchange and enter first three letters of scrip and then select the appropriate symbol which needs to be added in the market watch.



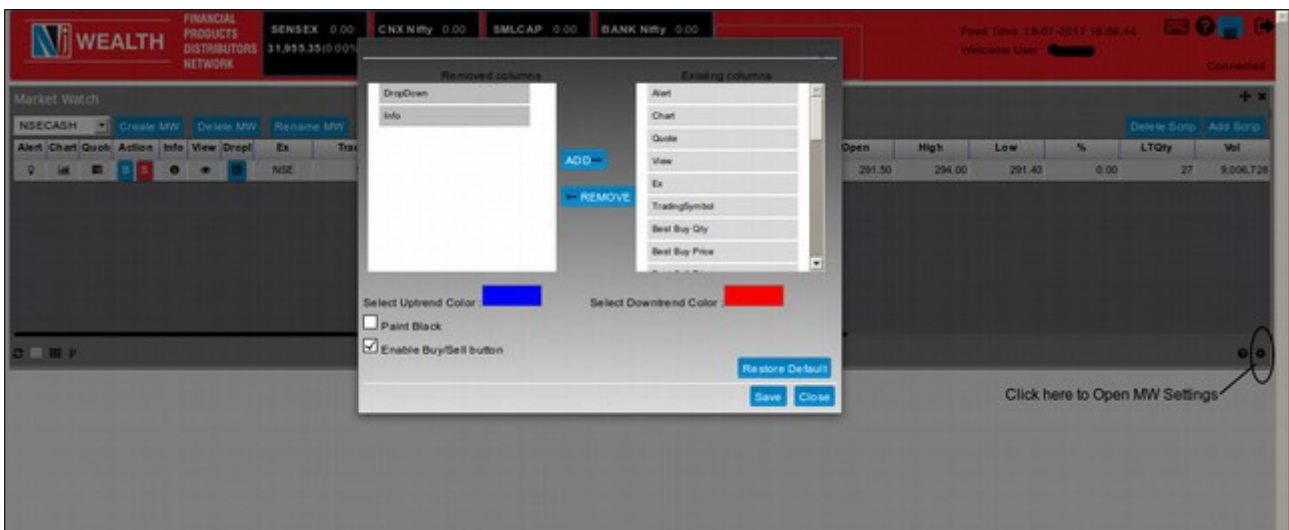
On selecting the symbol, it will be added in Market Watch and a alert message will be displayed as given in the below screen shot.



If User wishes to delete the scrip than select the scrips and click on the “Delete Scrip” button. To delete the existing Market Watch, User have to delete all the scrips from Market watch list first and after that on clicking “Delete MW” button will delete the current Market Watch.

### Market watch Settings

This option allows the user to re-arrange or hide the columns as per user choice. If the user wants to view the particular field in the market watch which is hidden then the user needs to ADD that field in non-hidden columns. Even if user wants to hide the particular field user can REMOVE that field from non-hidden columns to hidden columns. In the Market watch window, the following details are provided and updated on a real time basis.



## Index view:

User can add and view the value of any selected benchmark index. Clicks on Index and a drop down menu will open to select the Index or User can add minimum 3 characters in the text box to search the desired index.

User is allowed to add maximum 4 indices on the screen.

Index	Value	Change
SENSEX	9.55	31,984.79
CNX Nifty	-1.45	8,898.73
SMLCAP	-0.73	18,014.39
BANK Nifty	0.75	28,289.49

Ex	Trading Symbol	Best Buy Qty	Best Buy Price	Best Sell Price	Best Sell Qty	Close	Open	High	Low	%	LTQty	Vol
NSE	SBIN-EQ	2,808	292.45	292.55	711	293.30	293.00	294.25	292.10	-0.31	322	1,000,000
NSE	VIJAYABANK-EQ	8,713	74.75	74.65	418	74.85	74.85	75.25	74.50	0.00	85	300,000
NSE	NOCL-EQ	140	123.50	123.80	72	123.60	124.10	125.40	123.50	0.20	100	100,000
NSE	ICICIBANK-EQ	27	301.35	301.45	75	302.25	302.00	303.35	299.85	-0.25	1	1,000,000
NSE	BAJFINANCE-EQ	15	1,574.65	1,574.75	21	1,541.85	1,551.00	1,591.45	1,547.10	2.00	1	100,000

## Buy and Sell of the Scrips:

### Buy

To Buy the desired scrips, User first need to add the respective Scrip in the Market Watch window. If scrip is available in Market Watch window then on clicking the “B” button, a Buy window will pop up where User can enter the Quantity, select the Price of scrips as Market, Limit, Stop loss etc. On clicking Submit button order will be placed.

User can also press “F1” or “+” key to open the Buy window.

Place Order: SBIN-EQ

Exchange: NSE | Product Code: CNC | Buy/Sell: BUY | Price Type: MARKET | Retention: DAY

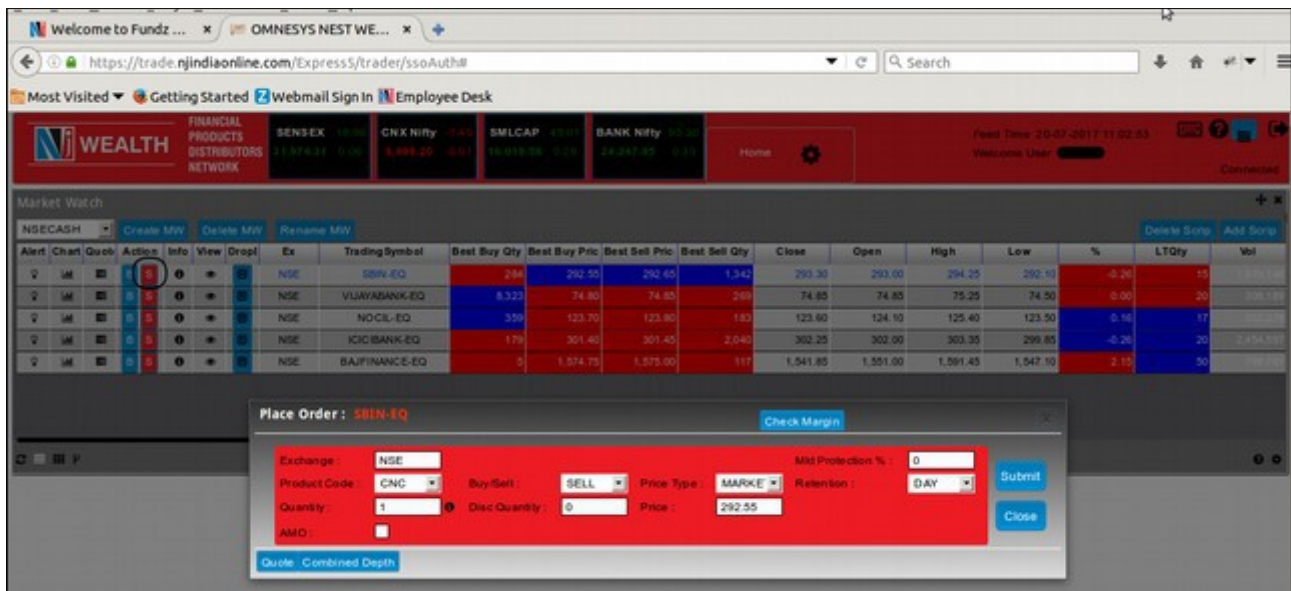
Quantity: 1 | Price: 292.60

Submit

## Sell

To Sell the desired scrips, User first need to add the respective Scrip in the Market Watch window. Then clicking on the “S” button , a Sell window will pop up where User can enter the Quantity, select the Price of scrips as Market, Limit , Stop loss etc. On Clicking Submit button order will be placed.

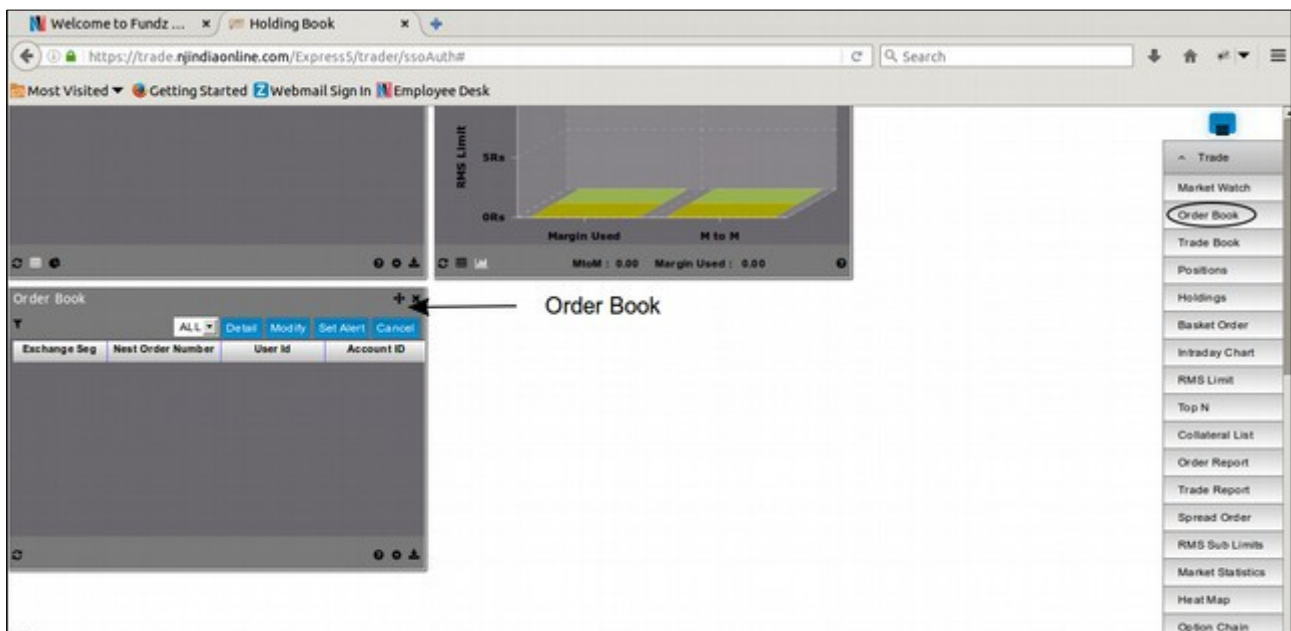
User can also press “F2” or “-” key to open the Sell window.



## Order Book:

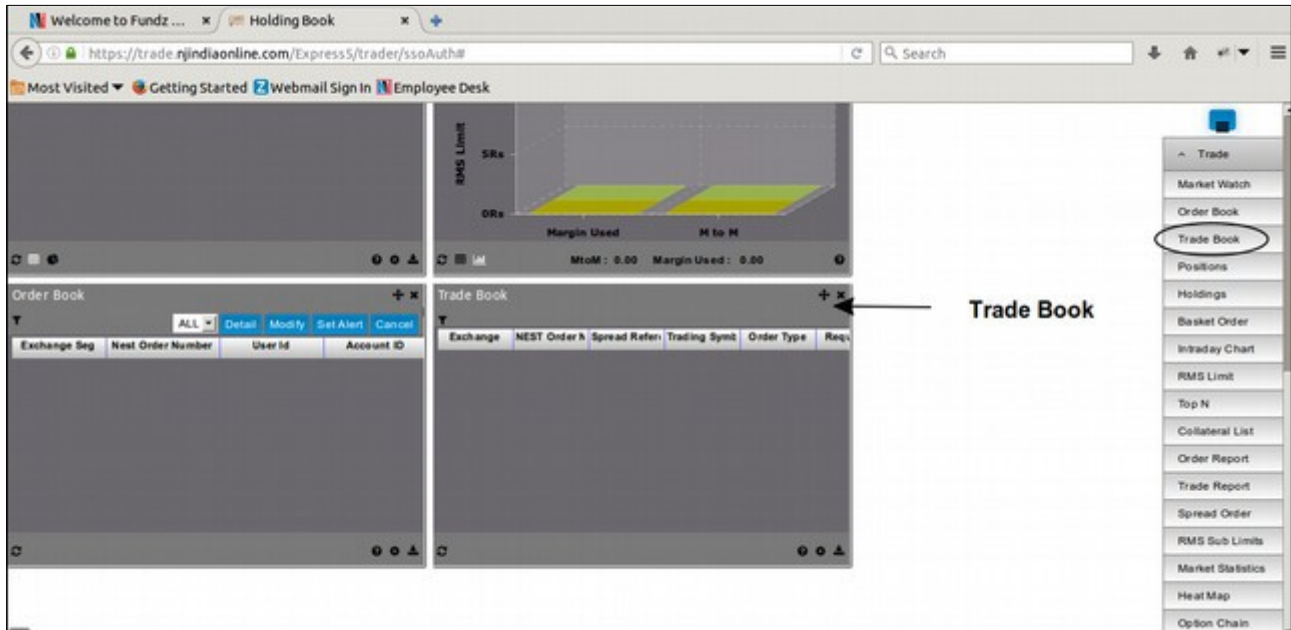
Order book is invoked from Menu -> Order Book.

Once the user places an order, it appears in the Order Book window. Information regarding the status of the order, quantity and other details are provided. If the user wishes to modify or cancel an open order, user can do so from the Order Book window. It will display all the order status which are open, pending, completed or rejected.



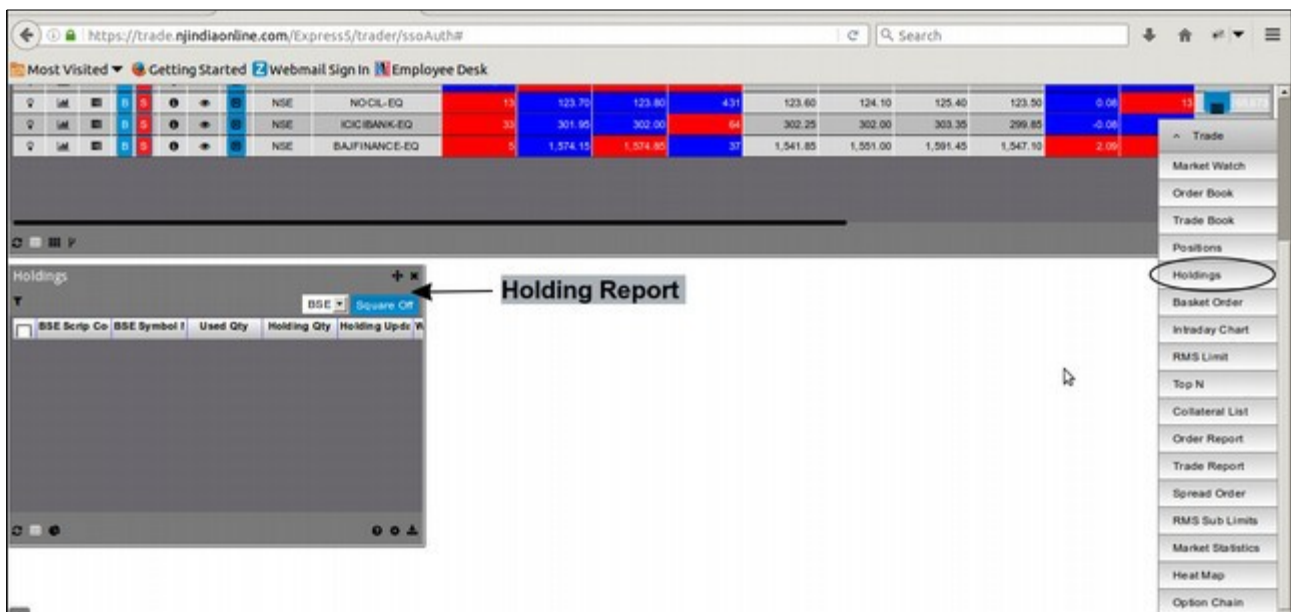
## Trade Book:

Trade book can be opened from the Menu – Trade Book. In Trade Book window User will be able to see those trades which have been executed successfully in the market. The user can change the Trade position from Intraday to BTST or Delivery based or vice-a-versa.



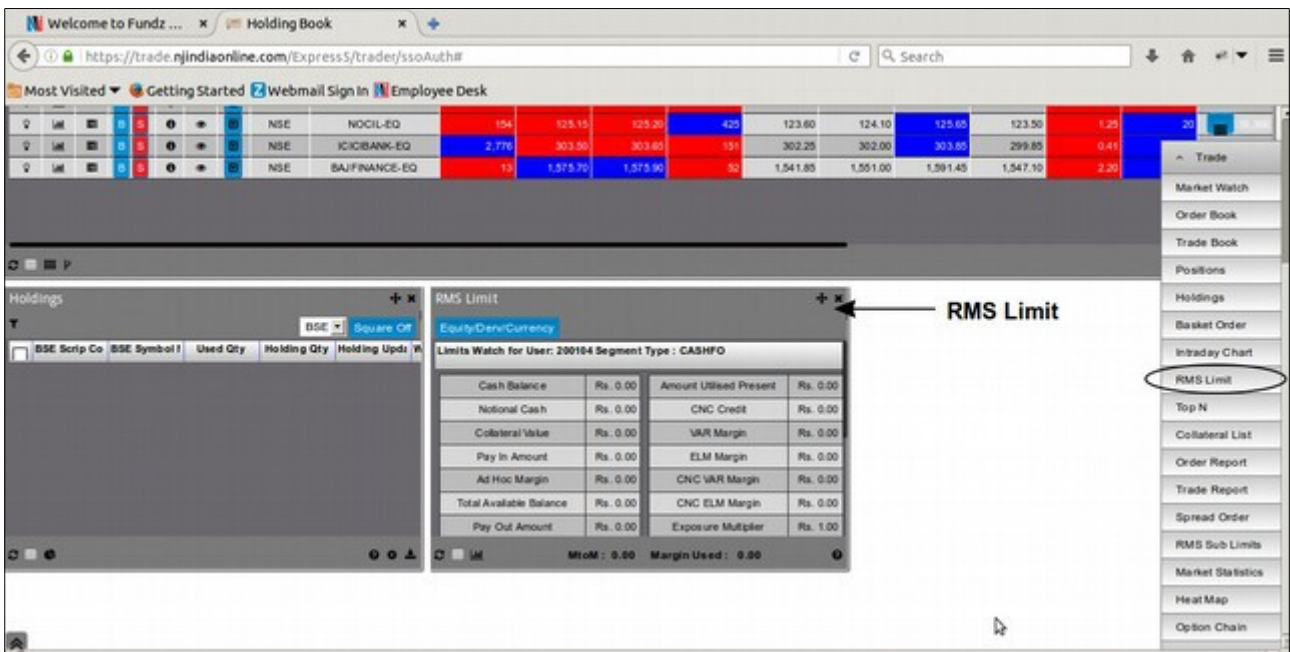
## Holding:

This option allows the user to view the holdings. To view it, User clicks on Menu (as shown in point 2.1) go to Trade and then click on Holding. A new window will open in the screen which displays the details of the holding such as total quantity, Used quantity etc. It also features square off all holdings as well as collateral.



## RMS Limit:

User can view the details of RMS parameters set by the admin. It shows the basic details to the user about the ledger balance and the margin utilize.



User can also see the RMS limit in chart format by clicking on the chart button.



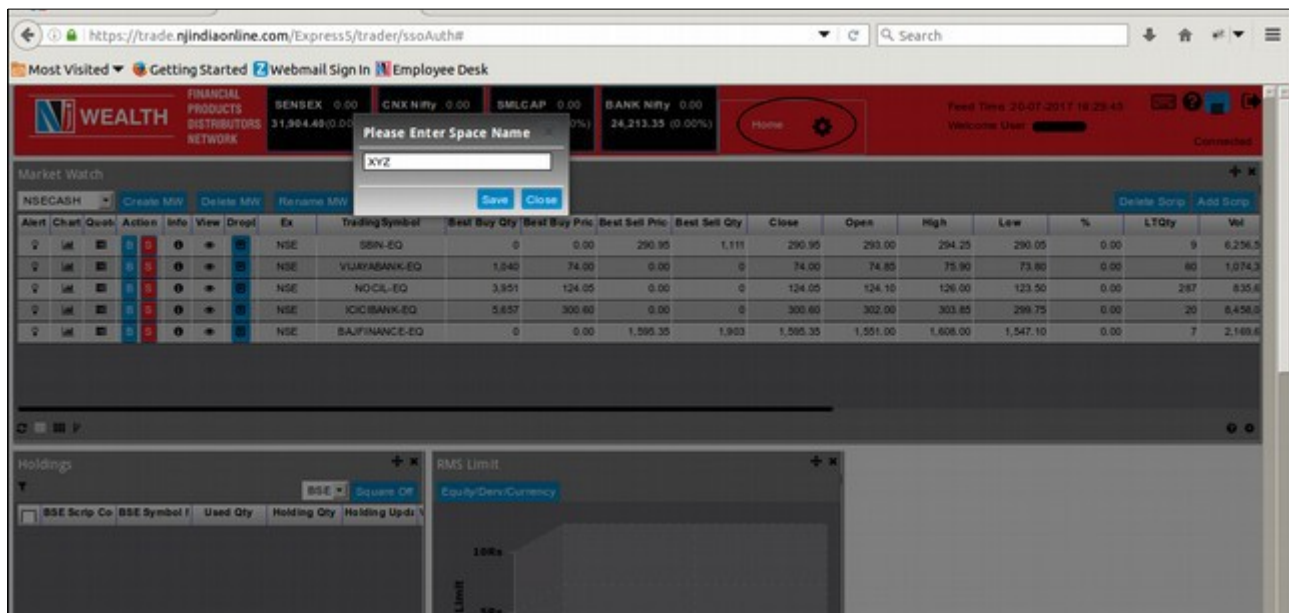


User can see the following limit details as follows:

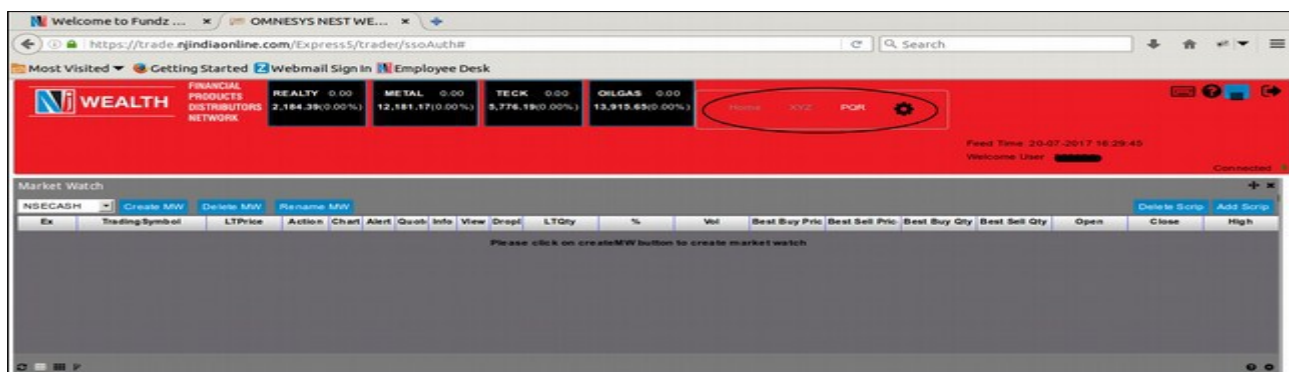
Cash Balance	Total Cash available
Pay In Amount	It shows the deposited amount
Total Available Balance	Its Shows the total cash available for the user
Margin Used	Its shows the margin used for the User
Pay Out amount	It shows the withdrawal amount
Max Pay Out amount	It shows the max pay out amount
Buy Exposure	It display the exposure amount given for buying
Sell Exposure	It display the exposure amount given for buying

### Home Button:

On clicking Home >> Settings button, User will ask for the Space(Market Window) Name. By entering a Space name, user is facilitates to have different windows to view different Indices, Scrips list.

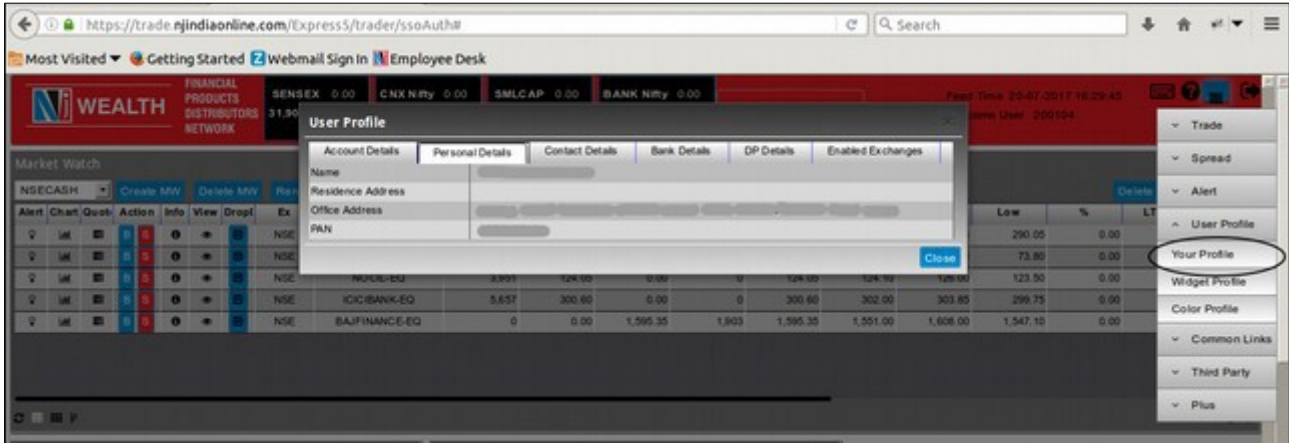


Once User saved his/her desired Market window than as displayed below, User can click on the name of Market window provided on Home & view the pre-saved Market watch & indices and other options.



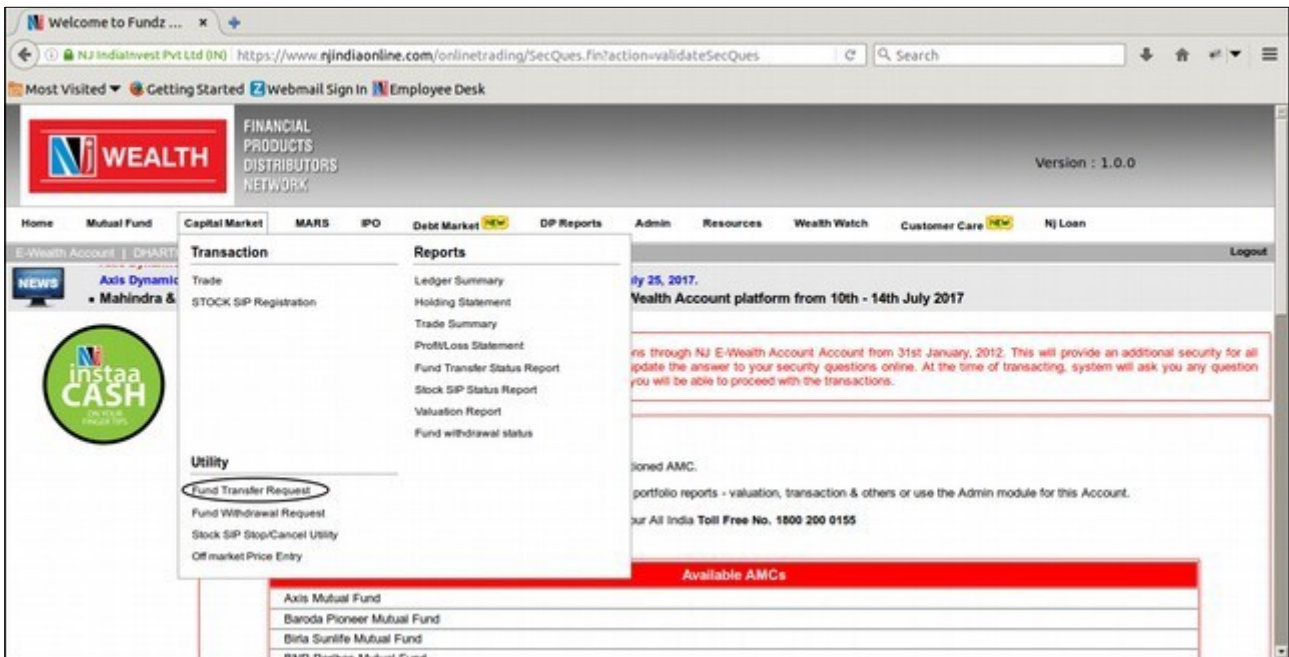
## Client Profile:

On clicking User Profile from Menu, User can able to view his/her personal details like UCC No and Log in , Address , Contact details like Mobile no & Email Id, Bank details mapped with UCC , DP details etc.



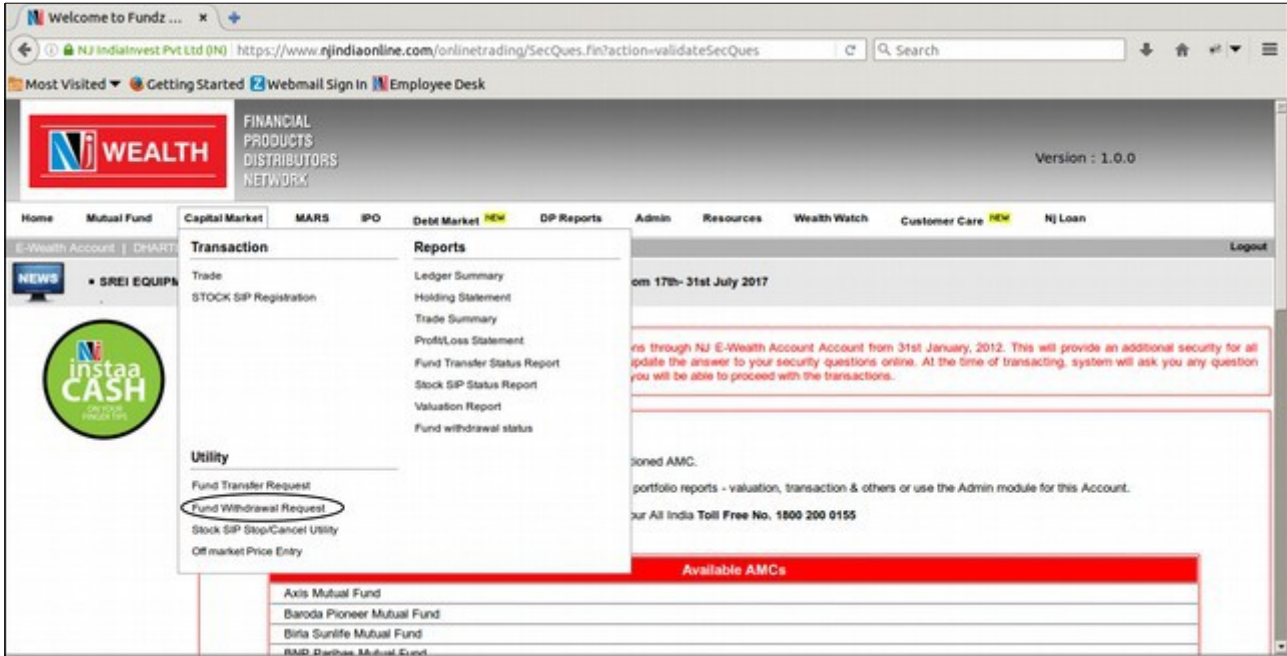
## Fund Transfer Request:

If user wants to transfer the Fund to buy scrips then the same request is given through NJ E-Wealth desk. User goes to the “Capital Market” menu and click on “Fund Transfer Request”. A Fund transfer request page will open , where User needs to select the Payment Mode, Bank account No., Mandate No and to give Amount which is to transfer for the Fund Pay in.



## Fund Withdrawal request:

If user wish to get fund pay out than the same is given through NJ E-Wealth desk. User goes to the “Capital Market” menu and click on “Fund Withdrawal Request”. A Fund withdrawal request page will open , where User will ask to mentioned Amount to withdraw and selection of the bank account. Here user is allowed to withdraw only “Withdrawable Balance”.



## Log out:

User can exit from the NJ CM Platform by clicking on the “Logout” button as shown :

